

All the tools below but not limited can be equipped with Victoria Trailers Exavators:

Excavator Attachments



Auger



Breaker



Log Grapple



Hydraulic quick hitch



Hydraulic Thumb Bucket



Rake



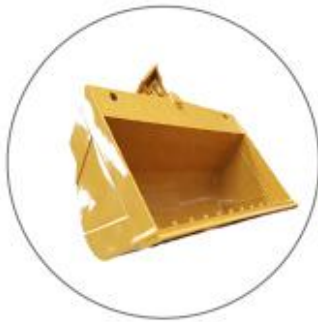
Forklift



Trailer



Teeth Bucket



Toothless Bucket



Ripper



Five Peels Grapple

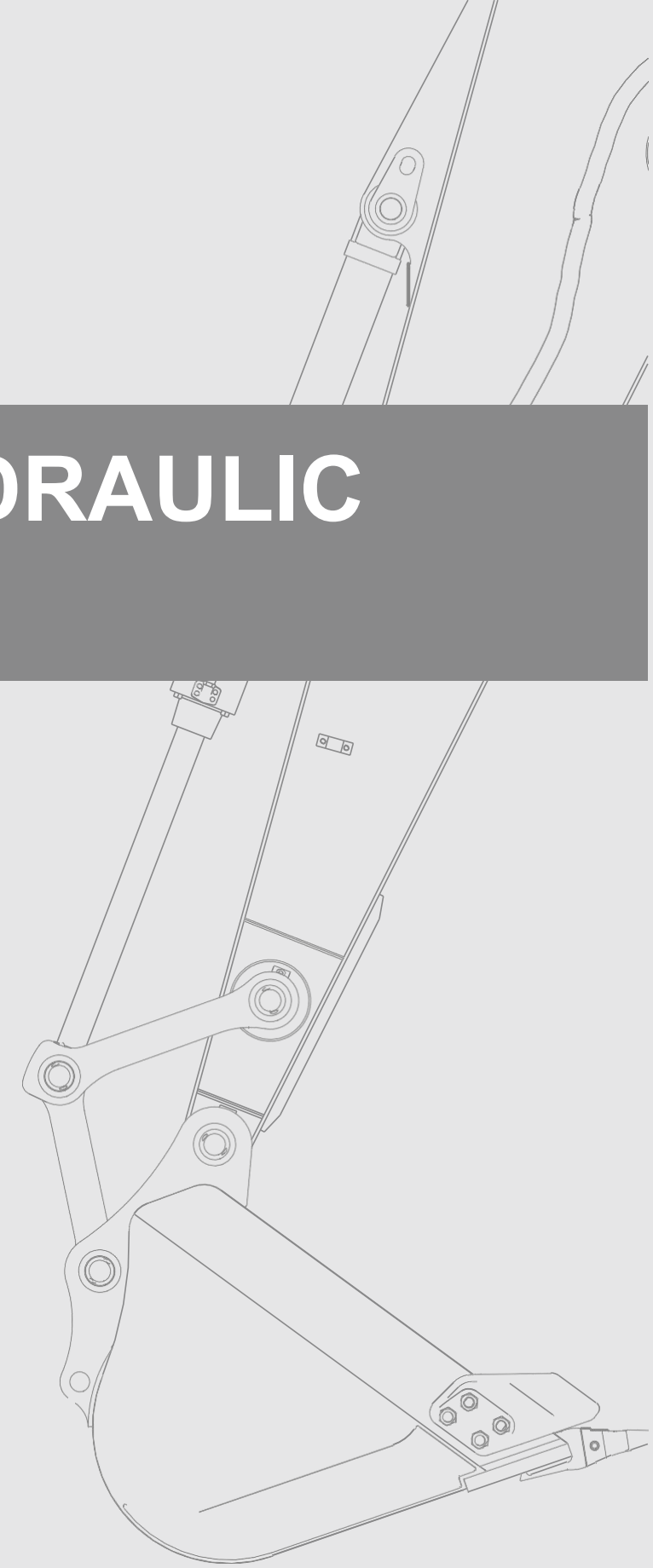
VT30 & VT35

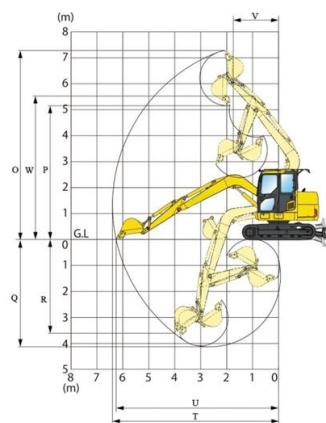
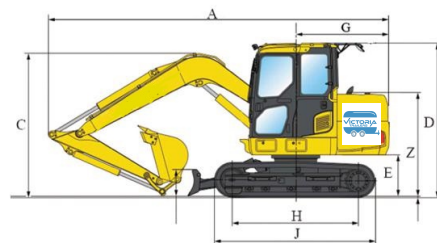
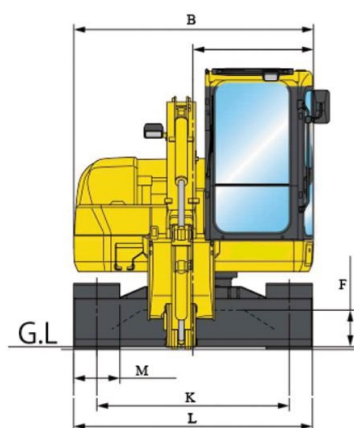
VT SERIAL HYDRAULIC EXCAVATOR

VICTORIA TRAILERS LTD.

Web: <https://www.victoriatrailers.ca>

Sales: 250-813-1933 Rentals: 236-562-2799





	VT30	VT35
Operating weight	2.7T	2.9T
Bucket capacity	0.1m3	0.1m3
Engine model	Kubota V1505,18.2Kw/ 24.80 HP	Kubota V1505,18.2Kw/ 24.80 HP
Climbing gradient	30°	30°
Walking speed	2.7 Km/h	2.7 Km/h
Rotation speed	10r/min	10r/min
Crawler	Rubber tracks	Rubber tracks
Swing angle	360°	360°
Boom swing angle	60°	60°
A-Total length	4180 mm/13'.71"	4180 mm/ 13'.71"
B-Total width	1350 mm/ 4'.43"	1500 mm/ 4'.92"
D-Total height	2200 mm/ 7'.22"	2200 mm/7'.22"
E-Platform clearance to ground	458 mm/ 1'.50"	458 mm/ 1'.50"
J-Crawler length	2000 mm/ 6'.56"	2300 mm/ 6'.56"
L-Crawler width	230 mm/ .75"	250 mm/ .82"
O-Max. digging height	3900 mm/ 12'.79"	3900 mm/ 12'.79"
P-Max. dumping height	2600 mm/ 8'.53"	2600 mm/ 8'.53"
Q-Max. digging depth	2500 mm/ 8'.20"	2500 mm/ 8'.20"
T-Max.digging radius	4040 mm/ 13'.25"	4040 mm/ 13'.25"

Equipment

Engine	Cab
Oil filter ●	Fan for Cab ●
Fuel filter ●	A/C for Cab ○
Oil-water separator ●	Suspension seat ●
Air filter ●	Heating system ○
Radiator ●	Engine neutral start system ●
Alternator ●	Cab ○
Expansion tank ●	Canopy ●
Electronic fuel pump ●	Windscreen washer and wiper ●
Muffler ●	Left/right rearview mirror ●
Hydraulic system	lighter ●
Hydraulic pilot control rod ●	Safety device front windscreen ●
Slewing parking brake system ●	Openable front windshield ○
Traveling parking brake system ●	Front working devices
Dual-speed traveling system ○	250mm/9.84" bucket ○
Auto traveling gear shifting system ●	500mm/19.69" bucket ●
Light	650mm/25.59" bucket ○
Boom light ●	1000mm/39.37" bucket ○
Superstructure light ●	Hammer pipes ●
Front cab light ●	Auxiliary pipes ●
Warning lamp ●	Hydraulic quick coupler pipes ○
Components of understructure	
Rubber tracks ●	
Steel tracks ○	
Telescopic chassis ○	
Foldable dozer blade ○	

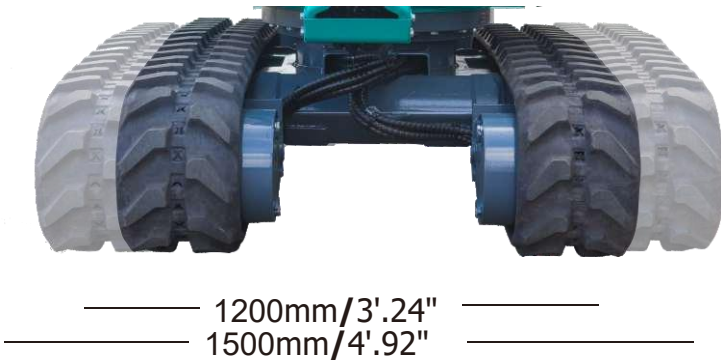
● Standard equipment
○ Optional equipment



Open-able front windshield

Telescopic chassis

Simple single lever controls the width of chassis to as narrow as 1200mm/3'.94" and to as wide as 1500mm/4'.92" to enhance operation stability.



Outstanding performance



Auto gear shifting during traveling
Auto high-speed and low-speed gear shifting; in case of obstacles during high speed traveling, it shifts to low speed gear of high torque

Pilot Traveling Control

Pilot traveling control for precise and correct operation



Emissions

The V1505 engine complies with EPA / CARB Tier 4 emissions regulations.

Durable Power

The Kubota 05 Series is an established leader, selected as the power source of choice by various industrial equipment manufacturers. By reducing output, the V1505 engine realizes a smooth transition from E3 to E4.

Load Capacity:

VT-30

Lift Point Height	Lift Point Radius(Max)		Lift Point Radius(9'75)		Lift Point Radius(8'.25)	
	Over-front(lbs)	Over-side(lbs)	Over-front(lbs)	Over-side(lbs)	Over-front(lbs)	Over-side(lbs)
6'.56	1168	771	1186	1047	1421	1419
4'.92	1190	745	1499	1064	1741	1366
1'.64	1300	727	1631	1036	2292	1300
0	1344	694	1741	1003	2403	1278

VT-35

Lift Point Height	Lift Point Radius(Max)		Lift Point Radius(9'75)		Lift Point Radius(8'.25)	
	Over-front(lbs)	Over-side(lbs)	Over-front(lbs)	Over-side(lbs)	Over-front(lbs)	Over-side(lbs)
6'.56	1168	793	1168.	1069	1433	1433
4'.92	1212	771	1521	1097	1763	1388
1'.64	1322	749	1653	1085	2314	1322
0	1366	727	1763	1025	2425	1278

Rated Power

HP 24.80/18.5 kW @ 2300 rpm

