

All the tools below but not limited can be equipped with Victoria Trailers Excavators:

Excavator Attachments



Auger



Breaker



Log Grapple



Hydraulic quick hitch



Hydraulic Thumb Bucket



Rake



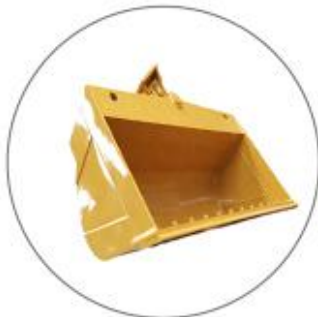
Forklift



Trailer



Teeth Bucket



Toothless Bucket



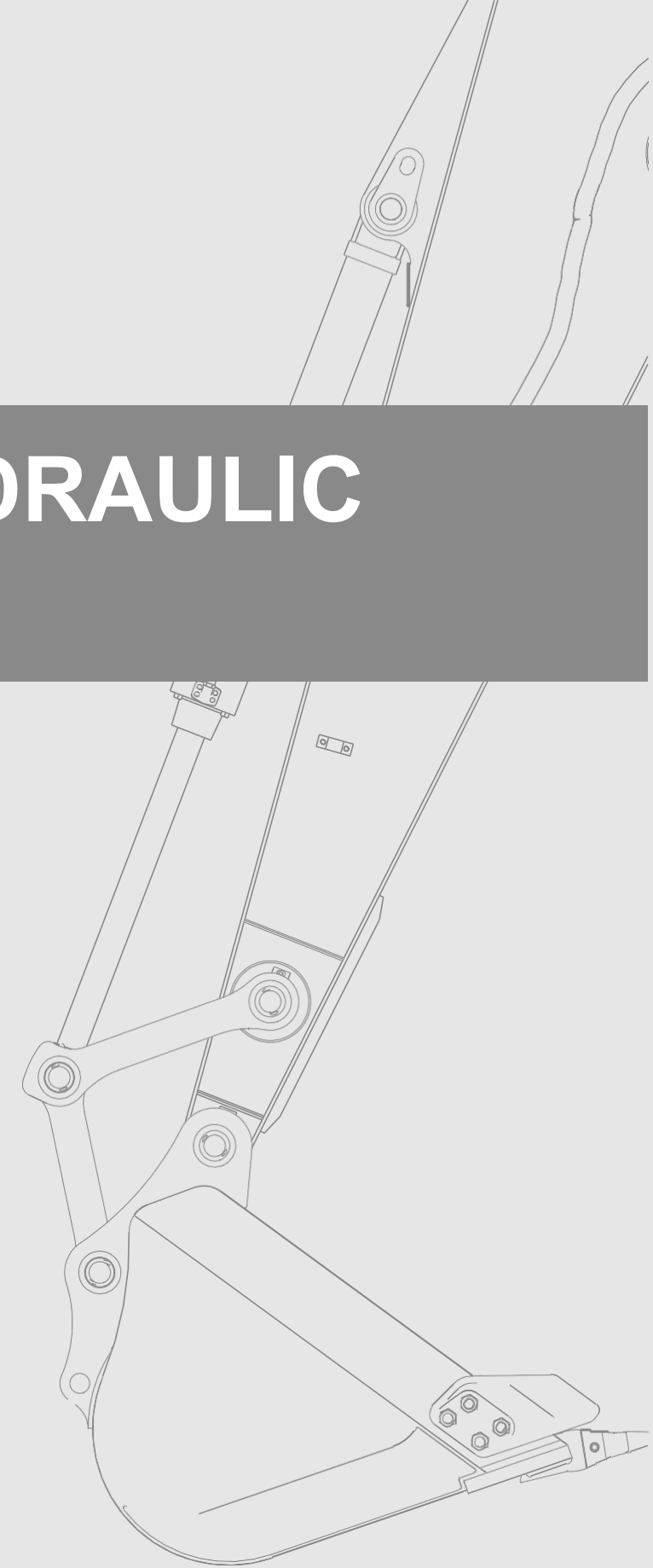
Ripper



Five Peels Grapple

VT-10

VT SERIAL HYDRAULIC EXCAVATOR



VICTORIA TRAILERS LTD.

Web: <https://www.victoriatrailers.ca>

Sales: 250-813-1933 Rentals: 236-562-2799

VT-10



Model		VT-10
Weight	kg	950
Bucket capacity	m³	0.025
Bucket digging capacity	kn	10.3
Engine		BRIGGS & STRATTON (Gasoline engine) 9.9kw, 14 HP, EPA
Swing Boom	°	65
Climbing gradient	°	30
Track length	mm	1090 / 3'.58"
Platform ground clearance	mm	380 / 1'.25"
Rear-end swing radius	mm	733 / 2'.40"
Width of chassis	mm	946 / 3'.10"
Width of track	mm	180 / .59"
Hight of track	mm	320 / 1'.05"
Over length	mm	2550 / 8.37"
Machine height	mm	2200 / 7'.22"
Walking speed	km/h	2.3
Max. digging radius	mm	2400 / 7'.87"
Max. digging depth	mm	1650 / 5'.41"
Max. digging height	mm	2490 / 8'.17"
Max. dumping height	mm	1750 / 5'.74"
Max. vertical depth	mm	1400 / 4'.49"
Min. gyration radius	mm	1190 / 3'.90"
Max. lifting height of dozer blade	mm	325 / 1'.07"
Max. lifting depth of dozer blade	mm	175 / .57"

Equipment

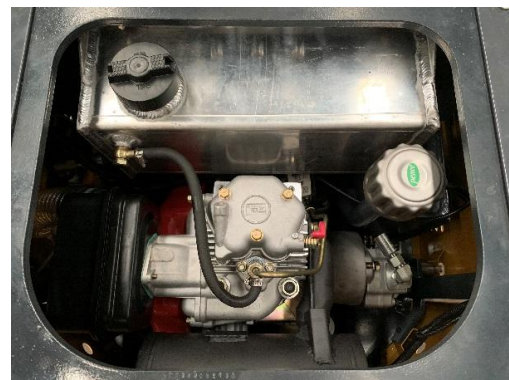
The regular and optional equipment varies from country to country. For more information, please contact with us.

Engine	Cab
Oil Filter ●	Fan for Cab ●
Fuel filter ●	A/C for Cab ○
Oil water separator ●	Suspension seat ●
Air filter ●	Heating system ○
Radiator ●	Engine neutral start system ●
Alternator ●	Cab ○
Expansion tank ●	Canopy ●
Electric fuel pump ●	Windscreen washer and wiper ●
Muffler ●	Front working devices
Hydraulic system	250mm bucket ○
Swing Boom ○	380mm bucket ●
Light	500mm bucket ○
Boom light ●	Hammer pipes ●
Warning lamp ●	Auxiliary pipes ●
Components of understructure	Hydraulic quick coupler pipes ○
Rubber tracks ●	
Steel tracks ○	
Telescopic chassis ○	
Foldable dozer blade ○	

- Standard equipment
- Optional equipment

01

Dynamical System



Famous brand BRIGGS & STRATTON engine can ensure the reliability of the machine in bad working conditions.



Equipped with red heat-resistant flexible coupling that acts as a shock absorber. If the engine jumps or the different shafts act, this will compensate.

02

Cooling System



Built-in exhaust fan and good heat dissipation system, to ensure that the machine does not heat, prolong the service life.



The external air circulation system of the engine ensures the heat dissipation of the engine, reduces the inlet temperature of the engine, and makes the engine more powerful and has a long life.

03

Oil Supply System



Equipped with high precision air filter and oil filter, the filtration accuracy is up to 1 micron, the filtration rate is more than 99.9%. Lubricating oil pressure alarm system for protect the machine, it will be alarm automatically if no lubricating oil.



The hydraulic tank breathing valve has a pressure compensating valve and air filtering function. The other manufacture's machines are only one cover, no pressure.

04

Running System



High-end main pump, main valve, rotary motor and walking motor to ensure high reliability of hydraulic system. Hydraulic system standard oil return filter.



The running horse is equipped with the discharge pipeline to meet the standards, which can prevent the internal pressure of the motor from being too high and the internal temperature from being too high, and improve the service life of the walking motor.